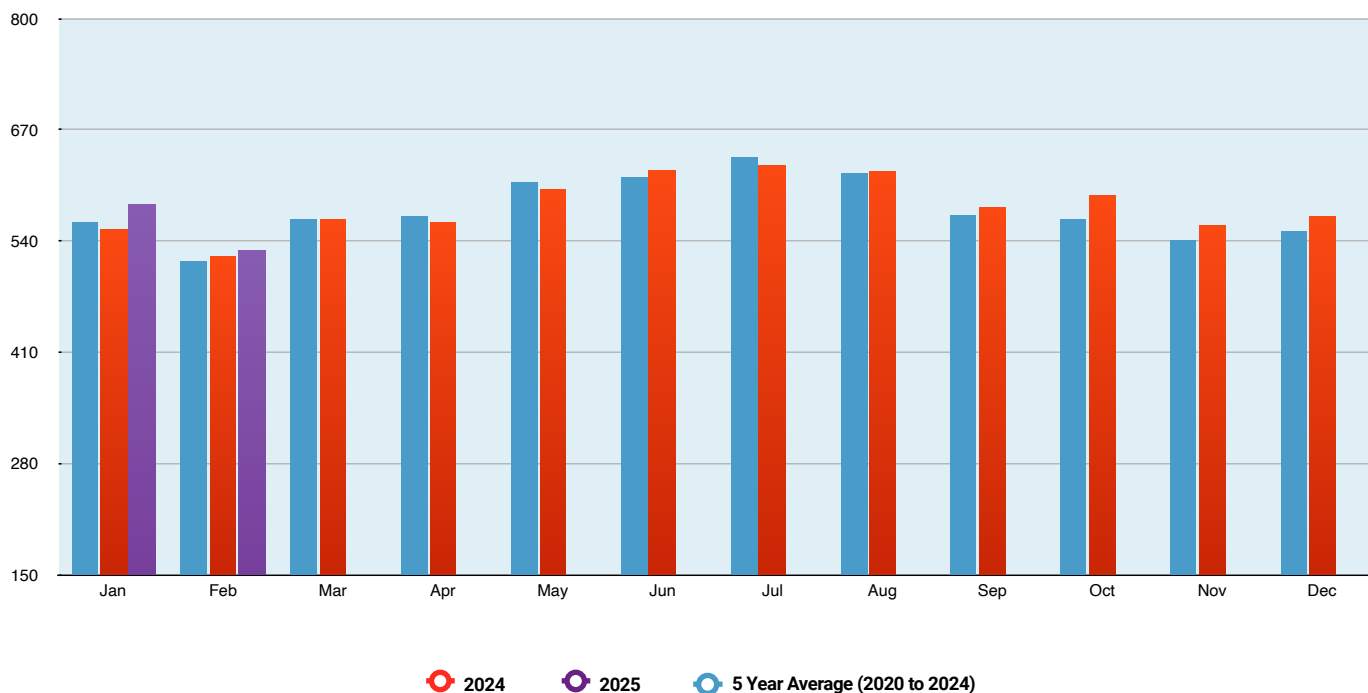


Total Monthly Consumption (Megalitres)

Jersey Water Data



Monthly Consumption (Megalitres)

Month	2024	2025	5 Year Cumulative Average (2020-2024)
January	553.3	582.6	561.61
February	522.0	528.9	517.41
March	565.4		565.55
April	561.7		569.46
May	600.3		608.37
June	622.5		614.83
July	628.5		638.01
August	621.3		619.84
September	580.4		571.27
October	593.6		566.42
November	559.1		541.72
December	570.0		552.34
Annual Total	6,978		6,927