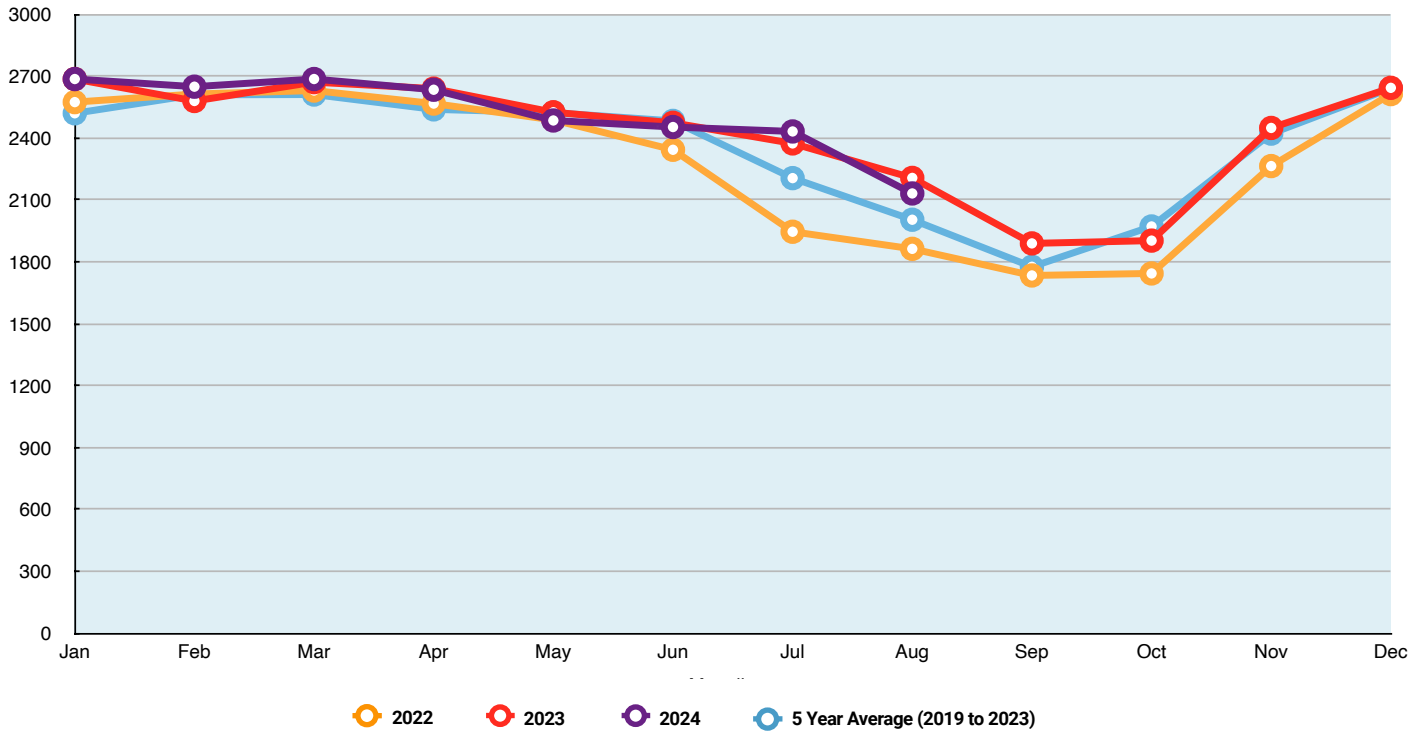


# Water In Store Information

Jersey Water Data



## Water in Store (taken on the last day of each month) (Megalitres)



| Month     | 2022   | 2023   | 2024   | 5 Year Cumulative Average (2019-2023) |
|-----------|--------|--------|--------|---------------------------------------|
| January   | 2574.7 | 2686.6 | 2686.6 | 2,520.50                              |
| February  | 2613.9 | 2580.1 | 2649.5 | 2,609.97                              |
| March     | 2630.8 | 2671.4 | 2686.6 | 2,611.41                              |
| April     | 2567.6 | 2640.2 | 2634.7 | 2,539.47                              |
| May       | 2488.3 | 2525.7 | 2485.7 | 2,523.65                              |
| June      | 2343.7 | 2474.5 | 2453.9 | 2,483.65                              |
| July      | 1946.4 | 2374.5 | 2432.5 | 2,206.27                              |
| August    | 1863.5 | 2207.3 | 2132.0 | 2,004.61                              |
| September | 1734.5 | 1889.9 |        | 1,776.67                              |
| October   | 1744.3 | 1903.4 |        | 1,971.98                              |
| November  | 2264.7 | 2449.5 |        | 2,421.97                              |
| December  | 2613.6 | 2643.9 |        | 2,641.54                              |

Jersey Water, St Helier, Jersey JE1 1JW  
 T: 01534 707301 E: info@jerseywater.je  
[www.jerseywater.je](http://www.jerseywater.je)

Jersey Water is the trading name of The Jersey New Waterworks Company Limited.

